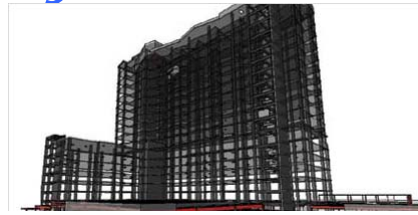




## February 2009 GSP eNews

**Graphics**  
Solution Providers Inc



Graphics Solution Providers Inc. (845) 677-5088

February, 2009  
Volume 2, Issue 2

Autodesk/GSP Money Saving  
Offers Of Special Interest

**NOTE: All promos have  
end dates, so please  
contact Craig Grant for  
all relevant information  
and pricing.**

Autodesk has launched the AutoCAD LT® New Seat Rebate Promotion, which offers significant savings of up to \$1,000 for eligible customers. Customers will receive a \$200 rebate for each new license (seat) purchased by March 31, 2009 (five-seat limit).

**Call Craig Grant now!**

### Contents

2010 Product Info!	1
Revit Seminar	3
Displaying rotated PDFs	4
Upcoming Civil 3D Webcasts	6
GSP Event Schedule	7

## Autodesk Unveils 2010 Software Portfolio for BIM

SAN RAFAEL, CA, Feb 10, 2009 - In a virtual press conference on Friday, Autodesk, Inc. announced new versions of its software products for the architecture, engineering and construction (AEC) industries, which are designed to help increase industry adoption of the building information modeling (BIM) process. Updated software in Autodesk's BIM portfolio includes Autodesk Revit Architecture 2010 software, Autodesk Revit Structure 2010 software, Autodesk Revit MEP 2010 software, AutoCAD Civil 3D 2010 software and Autodesk Navisworks 2010 software solutions.

In Friday's live webcast, Jay Bhatt, Autodesk senior vice president for AEC Solutions, and Jim Lynch, AEC Solutions vice president of marketing, addressed technology's crucial role in the development of infrastructure and transportation and the urgent need for more energy-efficient building practices across the construction industry. The pair spoke about the company's new product portfolio for the AEC industry and the effort to help project teams across disciplines innovate, analyze energy performance and increase productivity.

"In today's economic climate, firms need interoperable and flexible technology tools for

building information modeling that can help them deliver projects more quickly and cost-effectively," said Bhatt. "The 2010 versions of our software continue to deliver on the promise of BIM by further bridging communication between extended design and construction teams. These powerful tools will help our customers more efficiently and productively solve their design and construction challenges and do so with reduced environmental impact."

# 2010 Autodesk BIM Portfolio Revealed

## 2010 Autodesk Revit Platform

The Autodesk Revit platform based products for BIM feature an aligned user interface, giving the entire range of products a consistent look and feel. The updated Autodesk Revit platform also allows a greater level of interoperability for green building analysis, providing support for the green building extensible markup language (gbXML) format. Updates to the products based on the Autodesk Revit platform include:

**Autodesk Revit Architecture 2010 software** (BIM for architects and designers) enables customers to more accurately capture early design concepts with improved conceptual design functionality via:

- An intuitive conceptual design workspace to create complex geometry more easily.
- A new user interface (UI) that works the way designers think, providing a smoother.
- Improved interoperability with programs such as AutoCAD Civil 3D 2010 software, Autodesk 3ds Max Design 2010 software and Autodesk Inventor 2010 software.

**Autodesk Revit Structure 2010 software** (BIM for structural engineers, designers, and drafters) integrates a multi-material physical and an independently editable analytical model, to help provide for more efficient, more accurate documentation, analysis and design. Users will experience:

- Enhanced conceptual design, modeling and analysis.
- Improved user interface
- Improved performance and interoperability,

**AutoCAD Civil 3D 2010** software, a powerful BIM solution for civil engineering, helps project teams explore transportation, land development and environmental projects digitally before they are built. New functionality featured in AutoCAD Civil 3D 2010 includes:

- New design and analysis capabilities like automated intersection design and integrated storm sewer analysis.
- Quantity takeoff and interoperability with Autodesk Revit Architecture.
- New application menu, ribbon UI and quick access toolbar for better productivity.

## Autodesk Navisworks 2010

Autodesk Navisworks 2010 software -- including Autodesk Navisworks Review 2010 software, Autodesk Navisworks Simulate 2010 software, Autodesk Navisworks Manage 2010 software and Autodesk Navisworks Freedom 2010 software -- enables design and building professionals to unite project contributions into a synchronized model for building information modeling:

- Improved usability gives customers a more productive working environment, and new measuring tools and sectioning enhancements help improve workflow.
- Greater level of interoperability allows for enhanced collaboration.

## Autodesk 3ds Max Design 2010

New features in Autodesk 3ds Max Design 2010 include:

- More than 100 additional modeling tools help designers explore form making, while refining their designs with a new render-quality viewport display.
- Interactive lighting analysis helps users to iterate more quickly, validate sustainable solutions and avoid costly mistakes early in the design process.
- An extensive library of particle effects and flickerless rendering improvements to simplify communicating a compelling vision.
- 

Autodesk expects to announce Autodesk 3ds Max 2010 software for entertainment professionals in March 2009. For more information, visit [www.autodesk.com](http://www.autodesk.com).

## *Revit Architecture 2009 Seminar Try Before You Buy*

*Two Dates to Choose from: April 1st or 2nd in LaGrangeville, NY*

Providing benefits of the Revit® Architecture building information modeling (BIM) application, this solution protects your software, training, and design data investments; speeds creative design work; and enhances coordination of your presentations and documentation.

You make the switch to BIM at your own pace.

Revit Architecture 2009 software works the way you think. This innovative building design and documentation system helps you work naturally, design freely, and deliver efficiently. Changes made in one view update across all views and on the printable sheets. The name "Revit" implies this ease of revision that is at the heart of the software.

This hands-on seminar focuses on basic tools that the majority of users will find useful when working with Revit Architecture by creating a small office building. Topics to be covered in this seminar include:

- Create a 3D building model with walls, windows, and doors.
- Work with the basic drawing and editing tools in Revit.
- Create Levels and Grids as datum elements in the model.
- Add floors and roofs to the building model.
- Create stairs.
- Create sections, details, and schedules.
- Work with site tools and place this building on a site prepared in AutoCAD.
- Create camera views and a walk-through/walk-around.
- Work with design options tools
- Add component features, such as furniture and equipment.
- Set up sheets for plotting with text, dimensions, details, tags, and schedules.

Revit® Architecture 2009 turns unparalleled flexibility to maximum advantage: Providing benefits of the Revit® Architecture building information modeling (BIM) application, this solution protects your software, training, and design data investments; speeds creative design work; and enhances coordination of your presentations and documentation.

You make the switch to BIM at your own pace.

Signing up online is one click away: [SIGN ME UP!](#)

---

Note: This seminar is designed to expose you to Revit's power and the potential of its output. It is not intended to replace comprehensive training available to you as a GSP client.

Easy Online Signup at:

Register Now >

GSP Seminars fill up fast...Sign-up today

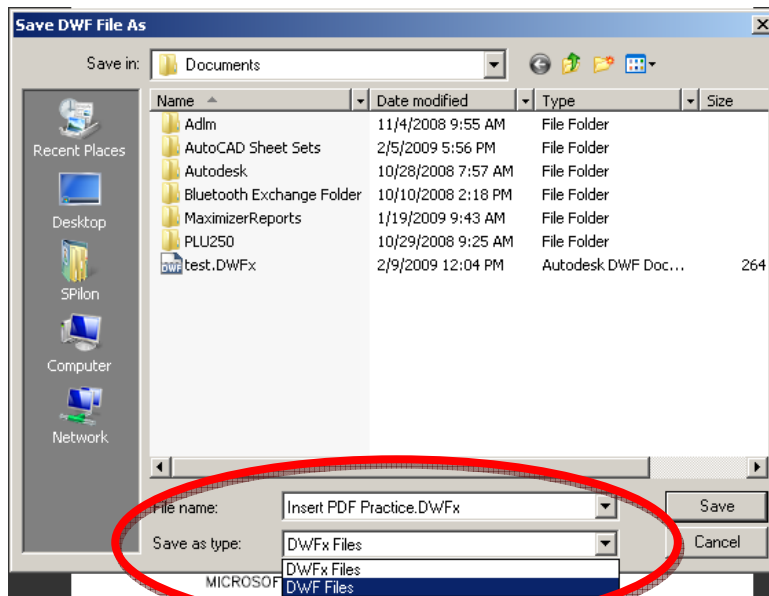
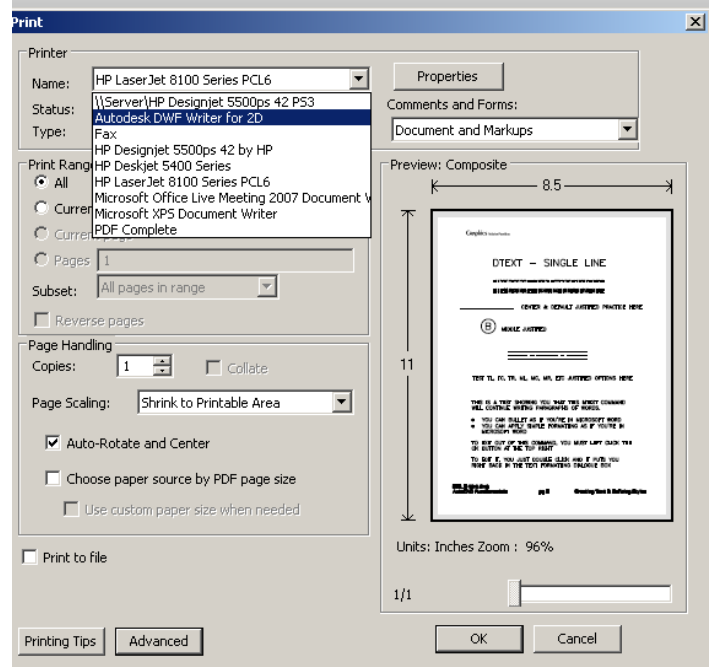
# A Workaround for Displaying a Rotated .PDF in Your Drawing

By Sabrina Pilon, GSP Architectural Specialist

Have you ever needed or tried to rotate a .PDF that has been cut and pasted into your drawing? If you have, you already know that when you insert a PDF into your drawing, it becomes an OLE, and you cannot rotate an OLE. In current releases of Autodesk software, you can successfully paste a PDF in but you will not be able to rotate it.

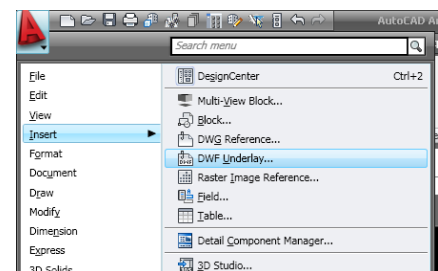
So if this has happened to you, try this work around. Open your PDF by double clicking on it in Windows Explorer. Once open in Adobe Reader, you'll want to print your drawing to a DWF file. Select the **File** pulldown and then choose **Print**. In the **Print** dialog box choose **Autodesk DWF Writer for 2D**. Then select **OK**.

Now you'll be in the **Save DWF File as** dialog box (see below). Choose the location that you'd like to save your DWF file (**Save in** pulldown). Then before you select the **Save** button be sure that you change the file **Save as type** option to **Dwf Files** (see below), and then select **OK**.

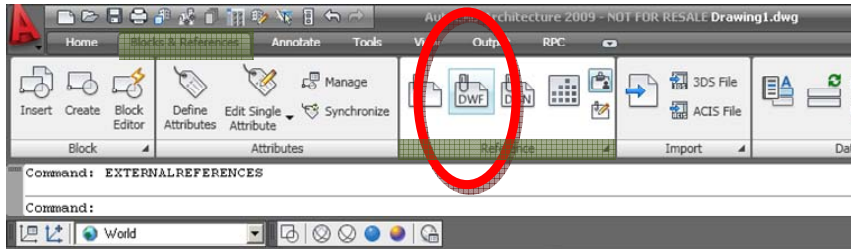


Now open up your Autodesk product and insert your newly created DWF file. You can do this in one of a few ways:

- You can go to the Insert menu and select **DWF Underlay...** and pick your insertion point



- You can navigate to the **Reference** panel of the **Blocks and References** tab of the Ribbon and choose DWF (see image below) or
- You can type in on the commandline **DWFATTACH**.



After inserting the DWF into your drawing, you'll now be able to rotate it and still view it. The only limitation is that you need to be in 2D Wireframe to view your DWF.

So anytime you need to bring in and rotate a PDF into your drawing, just print your PDF as a DWF, insert the new DWF into your drawing, set your visual style to 2D Wireframe, and rotate the DWF. You'll have a great rotated image of your old PDF in your drawing!



**Graphics**  
Solution Providers Inc

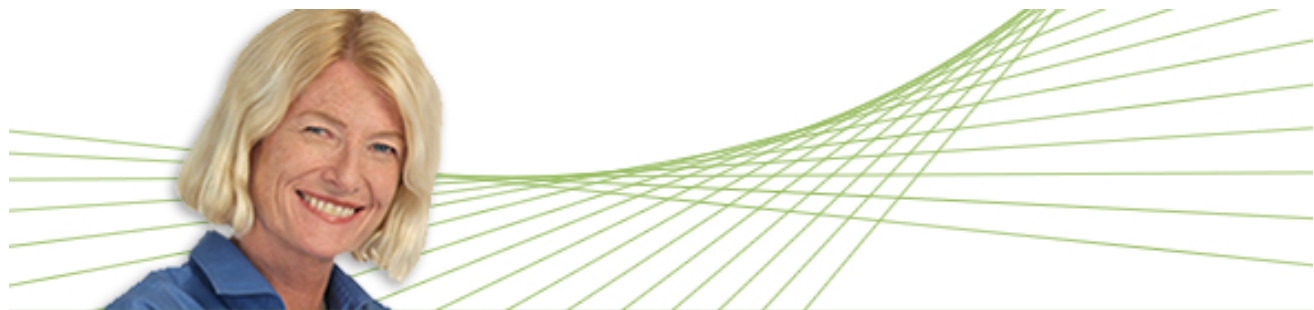
## *Upcoming Topics in the Autodesk Civil Engineering Webcast Series*

Autodesk has an exciting lineup of webcast presentations targeted at the civil engineering market. These presentations highlight the benefits of AutoCAD® Civil and AutoCAD® Civil 3D® software to designers and engineers involved in road design, land development, and environmental engineering projects. The topics for these presentations are organized into three webcast series:

- Autodesk Civil Engineering Solutions – Hosted by Autodesk Technical Specialist Lucy Kuhns, these presentations cover a broad range of topics, from “Building Information Modeling with AutoCAD Civil 3D” to “Preparing Models for Automated Machine Control.”
- Autodesk Road Design – This highly targeted series is designed to showcase the features, benefits, and competitive differentiation of AutoCAD Civil 3D software for tackling road design projects.
- Autodesk Customer Showcase: Wisconsin Department of Transportation (WisDOT) – This series, hosted by Autodesk Technical Marketing Manager Karen Weiss, allows Autodesk to present our recent success at the WisDOT. Each webcast will focus on a specific WisDOT design workflow and highlight how AutoCAD Civil 3D software is helping WisDOT to be more efficient and productive.

Take advantage of Autodesk experts as they present the value of Autodesk Civil Engineering solutions.

- Be sure to register for these webcasts at [www.autodesk.com/civil-webcasts](http://www.autodesk.com/civil-webcasts).



AutoCAD Civil 3D Webcasts

## *New Feature Releases for Architectural, Structural, and MEP Engineering Subscription Customers*

Effective immediately, eligible Autodesk® Subscription members, as part of their benefits, can download the following new releases via the Subscription Center:

### **Revit® Extensions for Revit® Architecture 2009 – Q4 Updates**

Revit Extensions are a series of easy-to-use applications that extend the capabilities of Revit Architecture 2009 software in key areas, including modeling, coordination, and documentation. Specifically, the extensions provided in this executable file are: Grid Generator, Freeze Drawings, Compare Models, Text Generator, Elements Positioning, and Model Generation based in Microsoft® Excel® spreadsheet software. The file installs the Revit Extensions for Revit Architecture 2009 and includes the Extensions Engine, a platform that hosts each extension within Revit Architecture 2009 software.

### **Revit® Extensions for Revit® MEP 2009 – Q4 Updates**

Revit Extensions are a series of easy-to-use applications that extend the capabilities of Revit MEP 2009 software in key areas, including modeling, coordination, and documentation. Specifically, the extensions provided in this executable file are: Freeze Drawings, Compare Models, Text Generator, and Elements Positioning. The file installs the Revit Extensions for Revit MEP 2009. It also includes the Extensions Engine, a platform that hosts each Extension within Revit MEP 2009 software.

### **Revit® Extensions for Revit® Structure 2009 – Q4 Updates**

Revit Extensions are a series of easy-to-use applications that extend the capabilities of the Revit® Structure 2009 software in key areas, including structural analysis, modeling, concrete reinforcement, interoperability, and construction documentation. Specifically, the extensions provided in this executable file are:

- **Structural Analysis:** Analysis Integration Enabler, Analysis Integration Enabler for Autodesk Concrete Building Structures 2009, Static Analysis of Beams, Static Analysis of Frames, Static Analysis of Slabs, Static Analysis of Trusses.
- **Import/Export:** CIS/2 Export, CIS/2 Import.
- **Reinforcement:** Automatic Reinforcement Generation, Reinforcement of Beams, Reinforcement of Columns, Reinforcement of Continuous Footings, Reinforcement Design, Reinforcement Drawings Enabler, Reinforcement of Parapets, Reinforcement of Piles, Reinforcement of Pile Caps, Reinforcement of Retaining Walls, Reinforcement of Slab Corners, Reinforcement of Slab Openings, Reinforcement of Spread Footings, Reinforcement of Walls, Reinforcement of Wall Corners.
- **Modeling:** Model Generation based in Microsoft® Excel® spreadsheet software, Grids Generator, Bridge Modeling (NEW)
- **Miscellaneous:** Text Generator, Elements Positioning, Freeze Drawings, Compare Models

The file installs the Revit Extensions for Revit Structure 2009 software. It also includes the Extensions Engine, a platform that hosts each extension within Revit Structure 2009. Revit Extensions for Revit Structure 2009 are compatible with the 32-bit and 64-bit versions of Revit Structure 2009 software (with the exception of Analysis Integration Enabler for Autodesk Concrete Building Structures 2009 and Reinforcement Drawings Enabler).

### **Residential HVAC Load Calculation Extension for Revit® MEP 2009 and AutoCAD® MEP 2009**

The Residential Heating, Ventilation, and Air Conditioning (HVAC) Load Calculation Extension for Revit® MEP 2009 software and AutoCAD® MEP 2009 software is a residential and light commercial HVAC load calculation software tool that determines peak cooling and heating loads for buildings. By downloading this extension, MEP professionals will be able to properly size building mechanical systems for residential and light commercial projects. Architects, home owners, and home builders can also benefit from the software tool on their projects. The extension can be used alone or in conjunction with other Autodesk® technology. The extension is able to integrate with these tools by importing and exporting gbXML. Content is currently available in English only.

**You can download these releases via the Subscription Center.**

# GSP Q1/Q2 2009 Training/Event Schedule

*The only thing worse than training employees and having them leave, is not training them, and having them stay.*

TRAINING SESSIONS			Feb 09	Mar 09	Apr 09
<b>AutoCAD Fundamentals</b>	3 Days	\$ 900	18, 19, 20		28, 29, 30
<b>AutoCAD Architecture Fundamentals</b>	3 Days	\$ 900		3, 4, 5	
<b>Revit Architecture Essentials</b>	3 Days	\$ 900			21, 22, 23
<b>Civil 3D Essentials</b>	3 Days	\$1,200			
<b>Civil 3D Site Grading &amp; Corridor Design Fundamentals</b>	3 Days	\$1,200		16, 17, 18	
<b>WORKSHOPS &amp; SEMINARS</b>					
<b>Revit Architecture "Try before you buy"</b>	1 Day	*			1
<b>Revit Architecture "Try before you buy"</b>	1 Day	*			2

If you have Help Desk Support with GSP, you receive 20% off regularly scheduled hands-on training sessions at our training facility.

If you wish to sign-up for any training session, click right here: [Register Now >](#)

Seminar Sign-ups can click here: [Register Now >](#)

\* No Charge to GSP clients

## Graphics Solution Providers

115 Barmore Road  
P.O. Box 159  
LaGrangeville, NY 12540

**Phone**  
(845) 677-5088

**Fax**  
(845) 677-8005

**E-mail**  
[cgrant@graphics-solutions.com](mailto:cgrant@graphics-solutions.com)

*Providing Digital  
Design Solutions  
for tomorrow ...  
TODAY!*

## About GSP

Graphics Solution Providers is a full service digital design (CAD) dealer with offices in LaGrangeville, NY (Poughkeepsie, NY area)

We have specialized in the Architectural, Civil, and Survey fields since 1992 by offering hardware, training and support services. Geographically, our primary market area is within NY, CT, Western MA, Northern

PA and NJ, ranging from firms with one seat to those with over 250 seats.

GSP is proud to be an American Family Business success story and is independently owned and operated for our client's benefit. We have a team of Autodesk certified professionals committed to your success. Our greatest satisfaction comes from

seeing your company succeed with computer technology.

No matter whether you are a self-employed architect or engineer just starting up, or an international design/build firm; located in a city or in a remote rural town - we strive to develop long-term relationships with our clients.